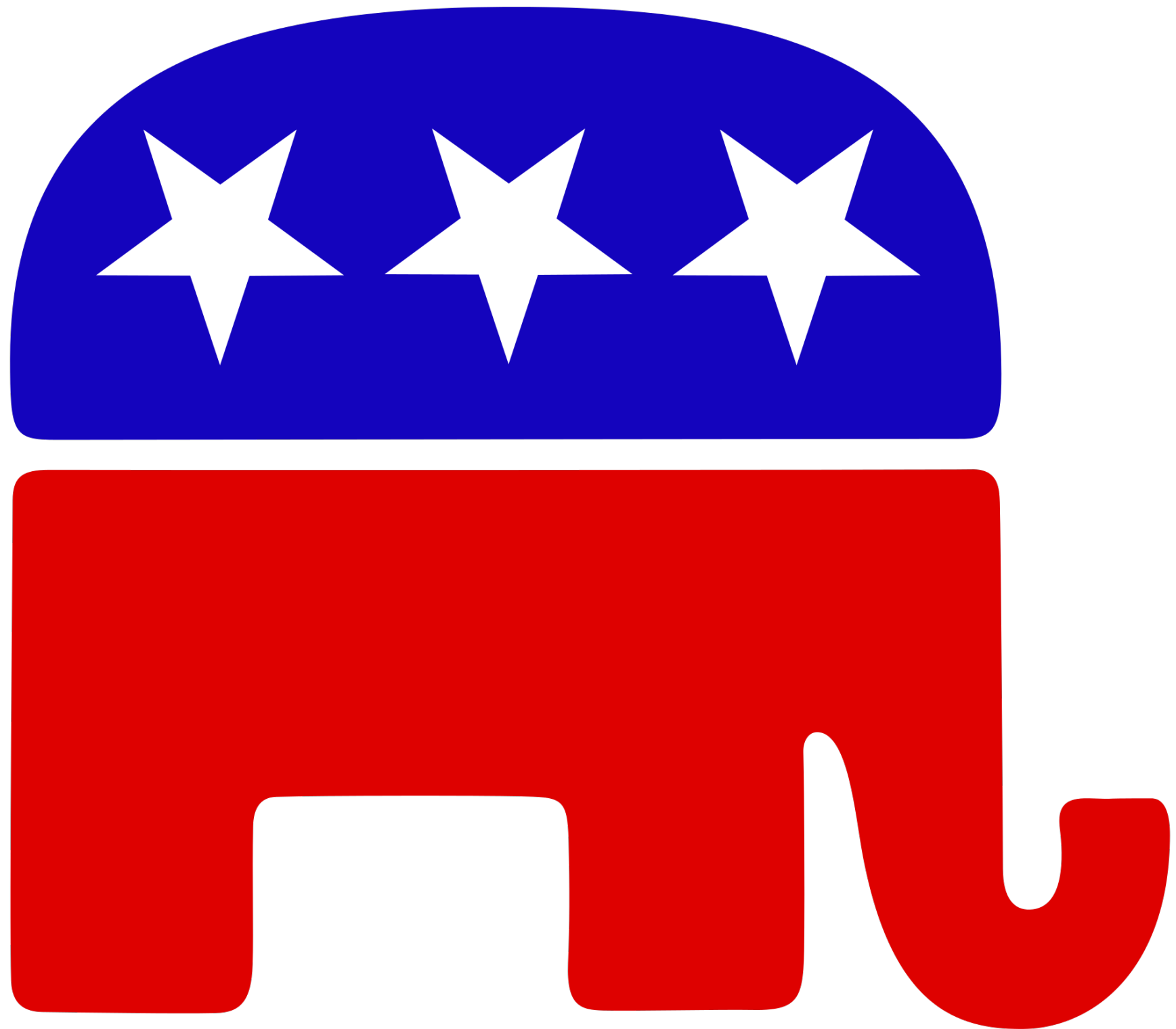
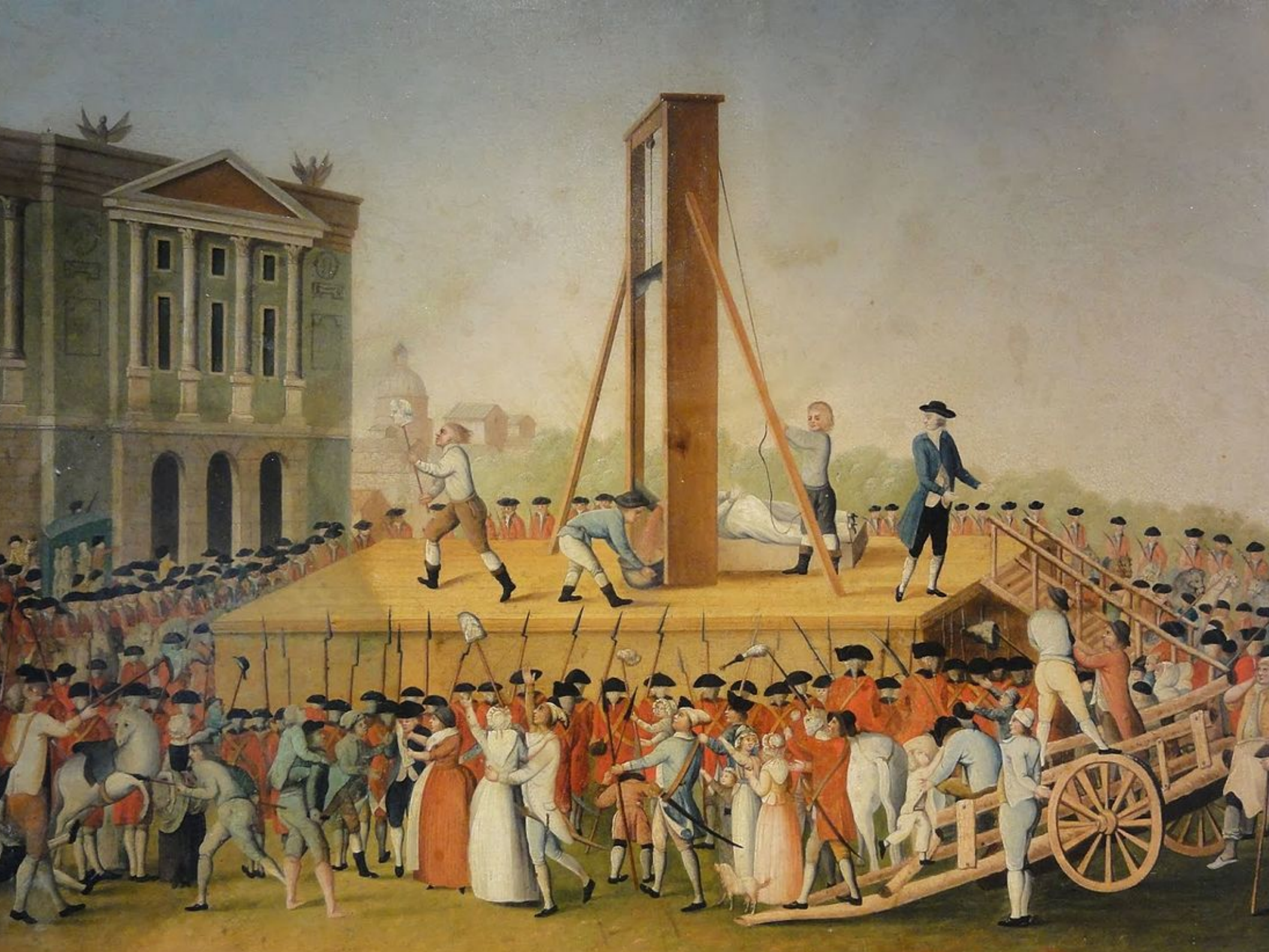


**I'm A  
Republican  
(Honest!)**











# British Line of Succession on 17 March 2018

## Sovereign: Queen Elizabeth II

Age 91 (born [21 April 1926](#))

Sovereign since [6 February 1952](#)

Previous change: [2 May 2015](#) |

### 1. The Prince Charles, Prince of Wales

Age 69 (born [14 November 1948](#)),

Son of the sovereign

### 2. Prince William, Duke of Cambridge

Age 35 (born [21 June 1982](#)),

Grandson of the sovereign

### 3. Prince George of Cambridge

Age 4 (born [22 July 2013](#)),

Great grandson of the sovereign

### 4. Princess Charlotte of Cambridge

Age 2 (born [2 May 2015](#)),

Great granddaughter of the sovereign

### 5. Prince Henry of Wales

Age 33 (born [15 September 1984](#)),

Grandson of the sovereign

### 6. The Prince Andrew, Duke of York

Age 58 (born [19 February 1960](#)),

Son of the sovereign

Welcome to the site.

Choose a date from the date-picker above or from the "interesting dates" menu to see the line of succession to the British throne on that date.

Tweets by  
[@linesuccession](#)



Line of Succession  
[@linesuccession](#)



One of the worst articles we've read about the succession in very long time. Charlotte is very unlikely to become queen (via [@romper](#)) [romper.com/p/when-will-pr...](#)



Here's Why Princess Cha...  
Most news coming from t...  
[romper.com](#)



Mar 12, 2018



Line of Succession



Quora

Knows About

[Edit](#)



**Religion**

205 answers



**British Monarchy**

135 answers



**God**

124 answers



**London**

76 answers



**Doctor Who (TV series)**

75 answers

[View More](#)



**Not hard to  
become a  
Quora expert**

**Who will succeed  
the Queen of  
England?**

**Why does Britain  
always have a  
queen not a king?**

**Who would be king  
if Prince Charles  
dies before Queen  
Elizabeth II?**



**What must Prince Charles  
actually feel about his  
mother pulling him from  
the line of succession and  
designating his son as heir  
to the throne?**

**Did the Queen  
assassinate  
Diana, Princess of  
Wales?**

**How to become  
king or queen of  
the UK\***

# **How to become king or queen of the UK\***

**\* And fifteen other  
Commonwealth Realms**



**Step 1.**

**Be a close relation  
of the monarch**

**Step 1a.**

**Don't be a woman  
with a younger  
brother**

**Step 2.**

**Don't die before  
the monarch**

**Step 3.**

**Don't be**

**illegitimate**



**Step 4.**  
**Don't be a**  
**Catholic**

**Step 4a.**

**Don't marry a  
Catholic**

**Recent(ish)  
updates**

# **Succession to the Crown Act (2013)**

**Step 1a.**

**Don't be a woman  
with a younger  
brother**

**~~Step 1a.~~**

**~~Don't be a woman~~**  
**~~with a younger~~**  
**~~brother~~**

**Step 4a.**

**Don't marry a  
Catholic**

~~Step 4a.~~

~~Don't marry a~~

~~Catholic~~



**Updated:**

- \* Be royal**
- \* Be alive**
- \* Be legitimate**
- \* Don't be Catholic**

**Brilliant**

**Idea!**

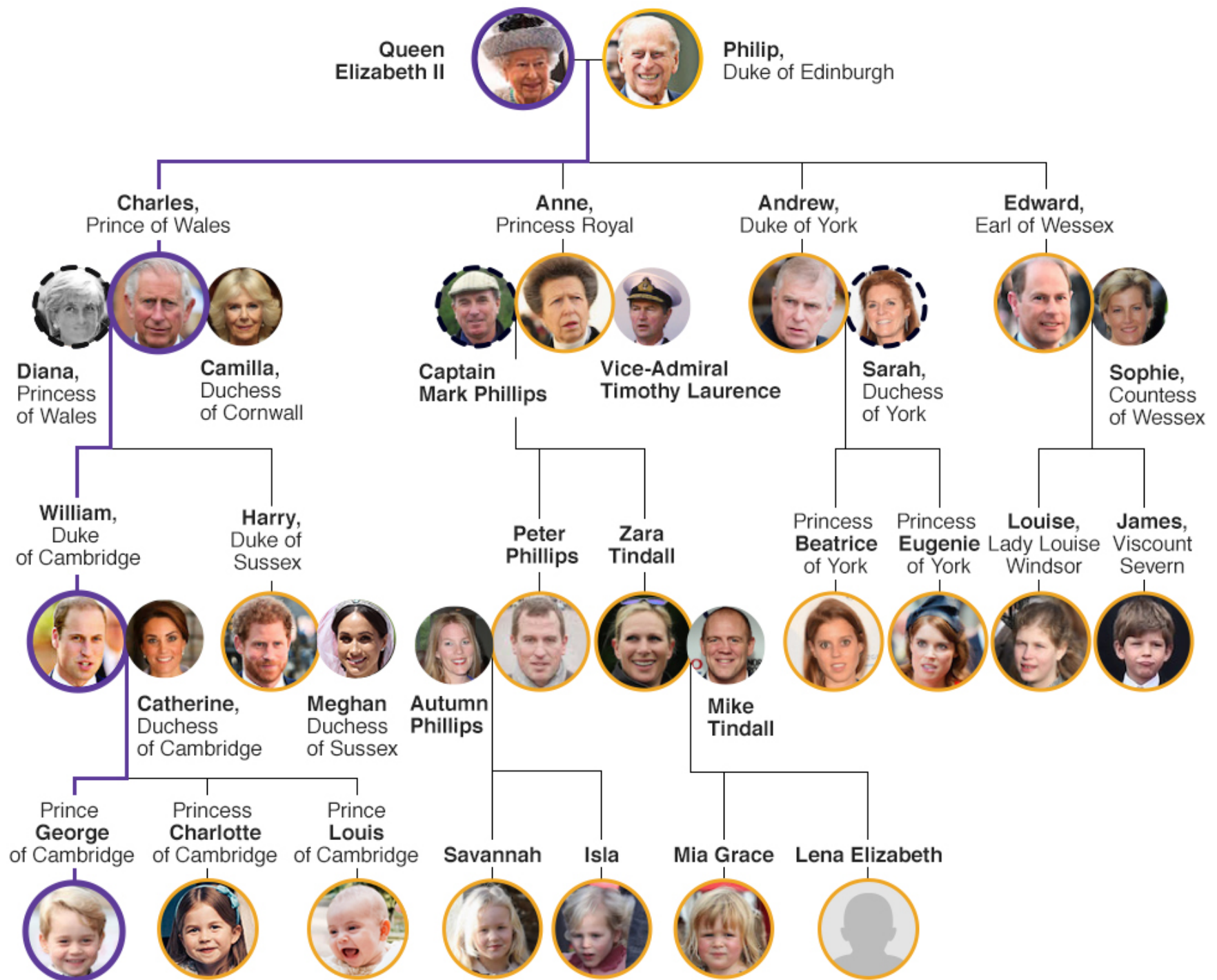
**Let's calculate the  
line of succession  
on every date  
back to 1701**

**How hard**

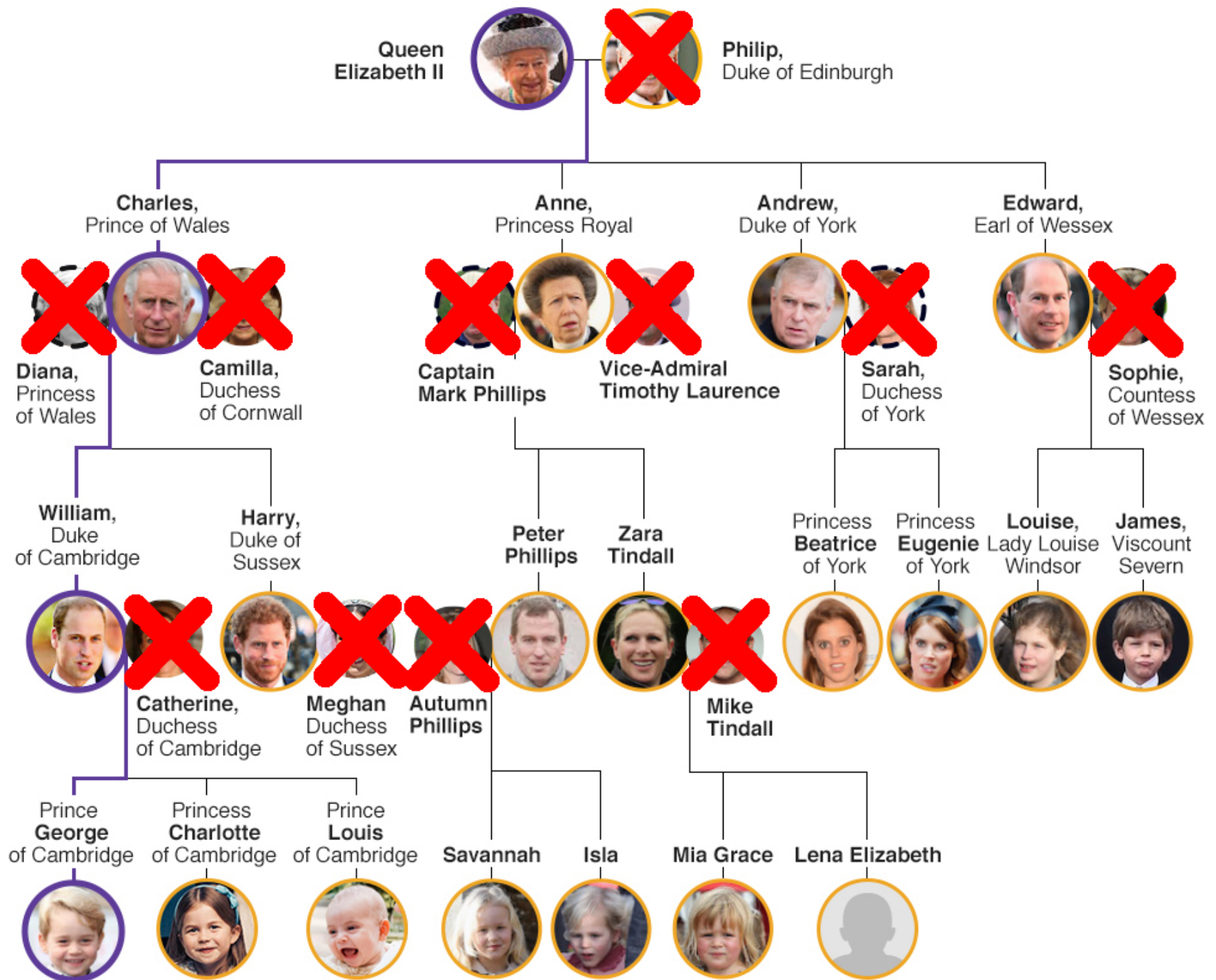
**can it be?**

**Family**

**Tree**



— Line of succession  
- - - Divorced



**That's gets  
19 people**



**More Data  
Needed**

# **Descendants of George VI**

# **Descendants of George V**

# **Descendants of Edward VII**

# **Descendants of Victoria**

**(Eventually)**  
**Descendants**  
**of Sophia**

**Wikipedia is  
your friend**

**Some  
complications**

**...**



**Titles and  
names**

- \* Princess Elizabeth of York**
- \* The Princess Elizabeth**
- \* The Princess Elizabeth,  
Duchess of Edinburgh**
- \* Queen Elizabeth II**

**Add a titles  
table**

# **Exclusions**

**Excluded because  
you married a  
Catholic**

**Included because  
you divorced a  
Catholic**

**Included because the  
law on being  
excluded for  
marrying a Catholic  
changed**

**Excluded because  
you became a  
Catholic**



**(Children aren't  
officially Catholic  
until their  
confirmation)**

**Male-preference  
primogeniture**

**Abolished in**  
**2013**  
**(Mar 27)**

**For children  
born after  
28 Oct 2011**

**Senna Lewis**

**(b 22 Jun 2010)**

**24<sup>th</sup> in line**

**Tāne Lewis**

**(b 25 May 2012)**

**26<sup>th</sup> in line**

**(Senna is 27th)**

**26 March 2013**

**26: Tāne Lewis**

**27: Senna Lewis**

**28 March 2013**

**26: Senna Lewis**

**27: Tāne Lewis**



**Dancer2**

**App**

**Some data  
presentation  
challenges**

# Sovereign: Queen Elizabeth II

Age 91 (born [21 April 1926](#))

Sovereign since [6 February 1952](#)

Previous change: [2 May 2015](#) |

## 1. The Prince Charles, Prince of Wales

Age 69 (born [14 November 1948](#)),

Son of the sovereign

## 2. Prince William, Duke of Cambridge

Age 35 (born [21 June 1982](#)),

Grandson of the sovereign

## 3. Prince George of Cambridge

Age 4 (born [22 July 2013](#)),

Great grandson of the sovereign

# Sovereign: Queen Elizabeth II

Age 91 (born [21 April 1926](#))

Sovereign since [6 February 1952](#)

Previous change: [2 May 2015](#) |

## 1. The Prince Charles, Prince of Wales

Age 69 (born [14 November 1948](#)),

Son of the sovereign

## 2. Prince William, Duke of Cambridge

Age 35 (born [21 June 1982](#)),

Grandson of the sovereign

## 3. Prince George of Cambridge

Age 4 (born [22 July 2013](#)),

Great grandson of the sovereign

**Find nearest  
common  
ancestor**

**Count  
intervening  
generations**

	0	1	2	3	4
0	Self	Parent	Grandparent	Great grandparent	Great great grandparent
1	Child	Sibling	Aunt/Uncle	Great aunt/uncle	Great great aunt/uncle
2	Grandchild	Niece/Nephew	First cousin	First cousin once removed	First cousin twice removed
3	Great grandchild	Great niece/nephew	First cousin once removed	Second cousin	Second cousin once removed
4	Great great grandchild	great great nephew	First cousin twice removed	Second cousin once removed	Third cousin

**Easy to do**

**A lot of data**

**to crunch**



**Enter**

**memcached**

**СН**

```
has cache => (  
  is => 'ro',  
  isa => 'CHI::Driver::Memcached',  
  lazy_build => 1,  
);  
  
sub _build_cache {  
  return CHI->new(  
    driver => 'Memcached',  
    namespace => 'succession',  
    servers => [ 'localhost:11211' ],  
    debug => 0,  
    compress_threshold => 10_000,  
  );  
}
```

```
sub get_relationship_between_people {  
    my $self = shift;  
    my ($person1, $person2) = @_;  
  
    my $relationship = $self->cache->compute(  
        'rel|' . $person1->id . '|' .  
            $person2->id,  
        undef,  
        sub {  
            return  
                $person1->relationship_with($person2);  
        }  
    );  
  
    return $relationship;  
}
```

**Didn't**

**work**

 @@ -42,7 +42,7 @@

42	<% END -%>	42	<% END -%>
43	 <span class="small">Age <% person.age_on_date(app.date) %>	43	 <span class="small">Age <% person.age_on_date(app.date) %>
44	(born <% link_date(person.born) %>),	44	(born <% link_date(person.born) %>),
45	-  <% person.relationship_with(app.sovereign.person) %> of the sovereign	45	+  <% app.model.get_relationship_between_people(person, app.sovereign.person) %> of the sovereign
46	<% IF exc %> Excluded: <% exclusions.\$exc %><% END %></span></li>	46	<% IF exc %> Excluded: <% exclusions.\$exc %><% END %></span></li>
47	<% IF NOT exc;	47	<% IF NOT exc;
48	count = count + 1;	48	count = count + 1;



**Two lessons  
learned**

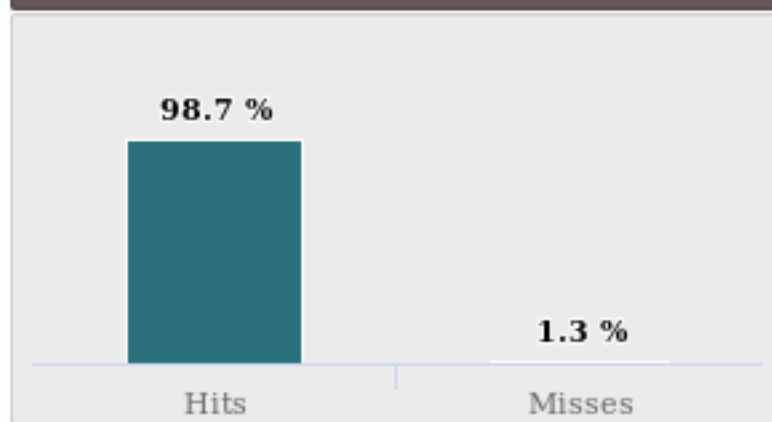
**Always use a  
model layer**



**CACHE ALL THE THINGS!**



### Hit & Miss Rate **Graphic**



# Sovereign: Queen Elizabeth II

Age 91 (born [21 April 1926](#))

Sovereign since [6 February 1952](#)

Previous change: [2 May 2015](#) |

## 1. The Prince Charles, Prince of Wales

Age 69 (born [14 November 1948](#)),

Son of the sovereign

## 2. Prince William, Duke of Cambridge

Age 35 (born [21 June 1982](#)),

Grandson of the sovereign

## 3. Prince George of Cambridge

Age 4 (born [22 July 2013](#)),

Great grandson of the sovereign

# Sovereign: Queen Elizabeth II

Age 91 (born [21 April 1926](#))

Sovereign since [6 February 1952](#)

Previous change: [2 May 2015](#) |

## 1. The Prince Charles, Prince of Wales

Age 69 (born [14 November 1948](#)),

Son of the sovereign

## 2. Prince William, Duke of Cambridge

Age 35 (born [21 June 1982](#)),

Grandson of the sovereign

## 3. Prince George of Cambridge

Age 4 (born [22 July 2013](#)),

Great grandson of the sovereign

**Batch**

**job**

**Calculate  
succession on  
every date**

**Note the  
dates when it  
changes**

**Dates in  
URLs**



<https://lineofsuccession.co.uk/>

<https://lineofsuccession.co.uk/2018-01-01>

<https://lineofsuccession.co.uk/2016-01-01>

**All the same  
content**

**Duplicate  
content is  
bad**

# Canonical Tag

```
<link rel="canonical"  
href="https://lineofsuccession.co.uk/" />
```

```
<link rel="canonical"  
href="https://lineofsuccession.co.uk/2014-  
01-17" />
```

```
<link rel="canonical"  
href="https://lineofsuccession.co.uk/1901-  
01-22" />
```

**More**

**SEO**

**Structured  
data**

```
<li itemscope
  itemtype="http://schema.org/Person">
  <span itemprop="name">The Prince
    Charles, Prince of Wales</span>
  <br><span class="small">Age 69
    (born <a title="Line of Succession on
      14&nbsp;November&nbsp;1948"
      href="/1948-11-14">
        14&nbsp;November&nbsp;1948
      </a>),
    <br>Son of the sovereign
  </span></li>
```



```
<li itemscope
  itemtype="http://schema.org/Person">
  <span itemprop="name">The Prince
    Charles, Prince of Wales</span>
  <br><span class="small">Age 69
    (born <a title="Line of Succession on
      14&nbsp;November&nbsp;1948"
      href="/1948-11-14">
        14&nbsp;November&nbsp;1948
      </a>),
    <br>Son of the sovereign
  </span></li>
```

**Google likes  
structured  
data**

**Todo**

**Moar**

**data**

**Moar**

**views**

**Moar**

**marketing**

**<https://lineofsuccession.co.uk/>**

**<https://github.com/davorg/succession>**

**@linesuccession**

**@davorg**

**Vive la  
révolution!**



